

SCAN~LINK Technologies Inc.



## [ DATA DOWNLOAD QUICK GUIDE v.2 ]

This user's guide is intended for Rapid Pair user technicians. This guide is provided as a quick guide through Rapid Pair for the download of data logs.

## Overview

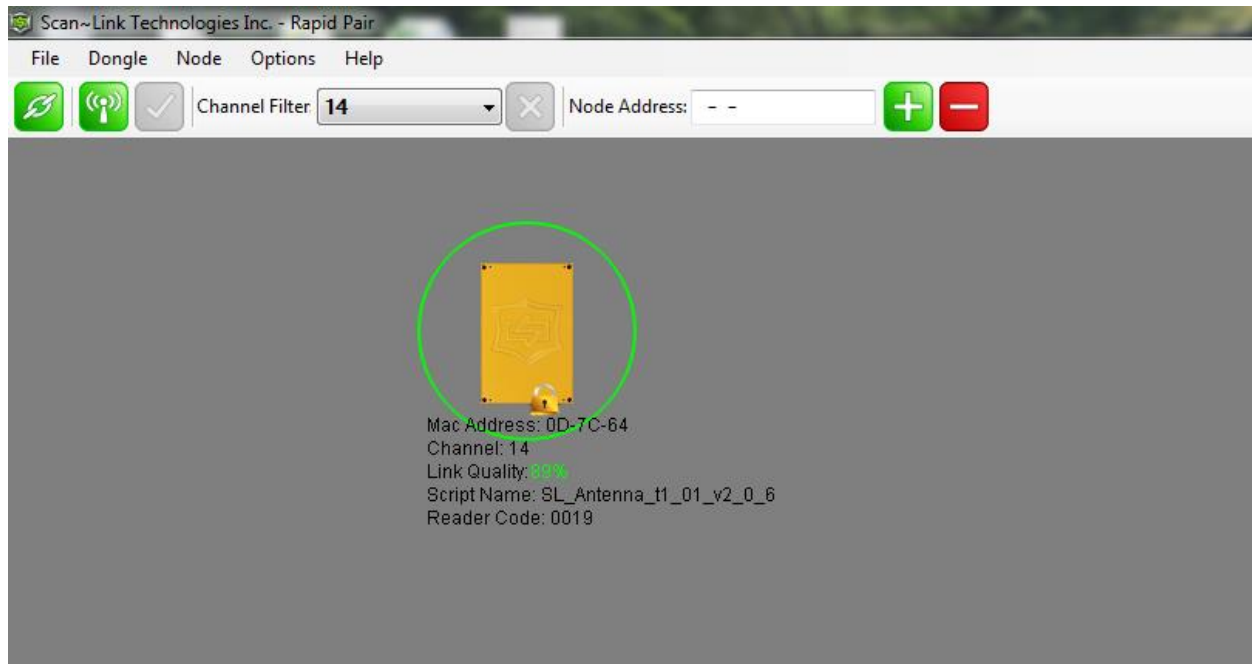
The Data Download (Detection Log) is a very important tool in changing the mindset of a work environment. It allows a company to see which tags (Hard Hat, Vest, Asset) were detected and when they were detected. The information when downloaded is in a raw format and must be analyzed in order to be used to gain maximum impact. Below are the steps to download the Detection Log.

### 1. Find Antenna

Using RapidPair™, find the Antenna which a Log is needed to be downloaded from. If this step is not known, please see the RapidPair™ manual.

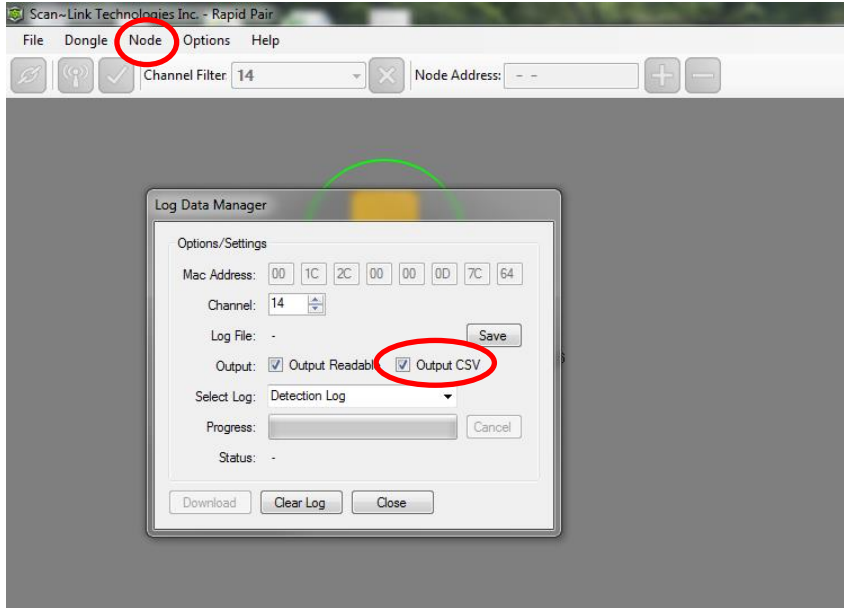
### 2. Select Antenna

Select the appropriate Antenna. A green circle will indicate the selection has been made.



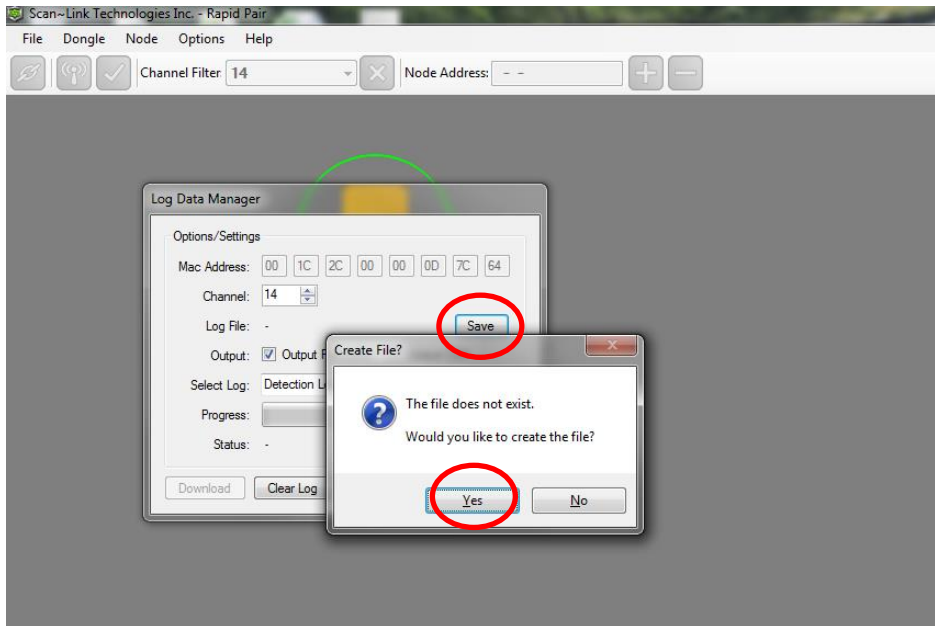
### 3. Open Log Data Manager

From the headers, select "Node" and then "Log Data Manager". A user form will appear. Check the option for "Output CSV".



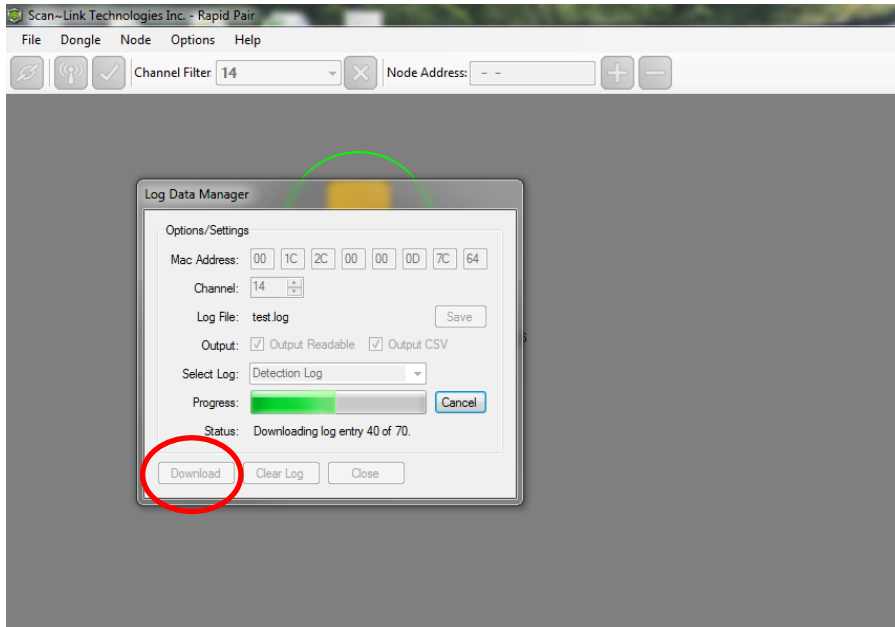
### 4. Save the Detection Log File

Select the "Save" button and choose a name and location to save the file. A "Create File?" pop up will appear. Select "Yes" if you wish to create a new file. If you will be creating the same file in the same location, then the pop up will not appear.



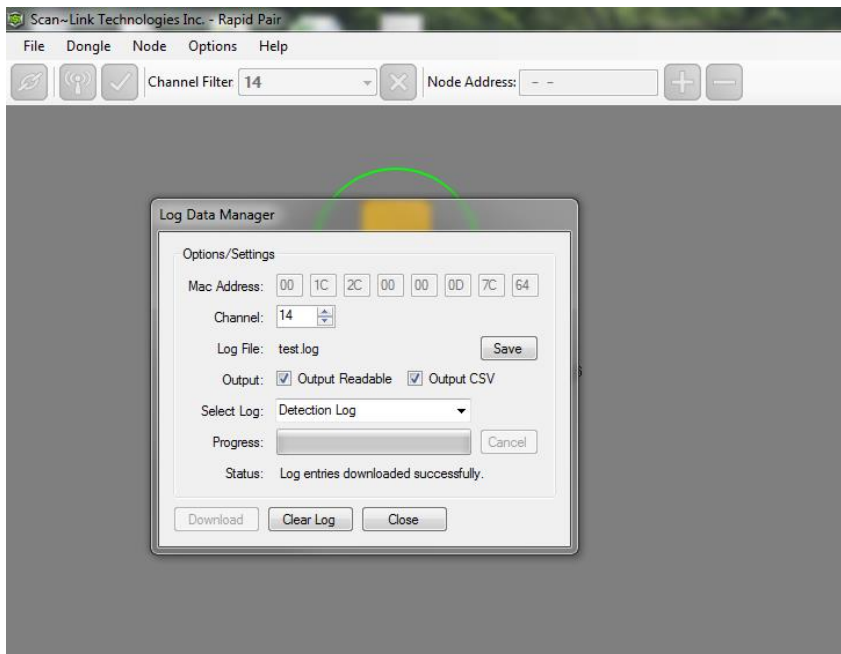
## 5. Download Detection Log

Select the "Download" button at the bottom of the Log Data Manager. The progress bar will soon begin to fill and the status will update with the number of log entries.



## 6. Download Complete

Once the download is complete, the Progress Bar will empty and the Status will state "Log entries downloaded successfully."



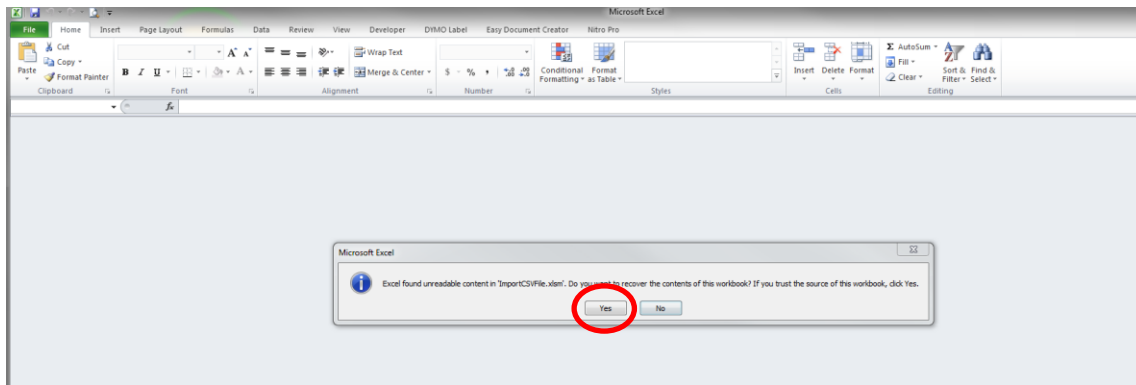
## 7. Downloaded Files

Open the folder where the files were saved. There will be 3 files; a \*.csv, \*.log, and \*.txt. The .csv file is the one to use for readability. It will list out all the tags detected and the time they were detected. Each Tag ID is comprised of Alpha Numeric Characters. When there are only Numeric Characters and no Alpha, Excel imports the data not as text and creates an exponent number. For Example, 010100040012300 becomes 1.01E+14. If this is the case in the downloaded file, continue to step 8.

	test.csv	6 KB	Microsoft Excel C...	7/3/2018 2:42 PM
	test.log	3 KB	Text Document	7/3/2018 2:42 PM
	test.txt	7 KB	Text Document	7/3/2018 2:42 PM

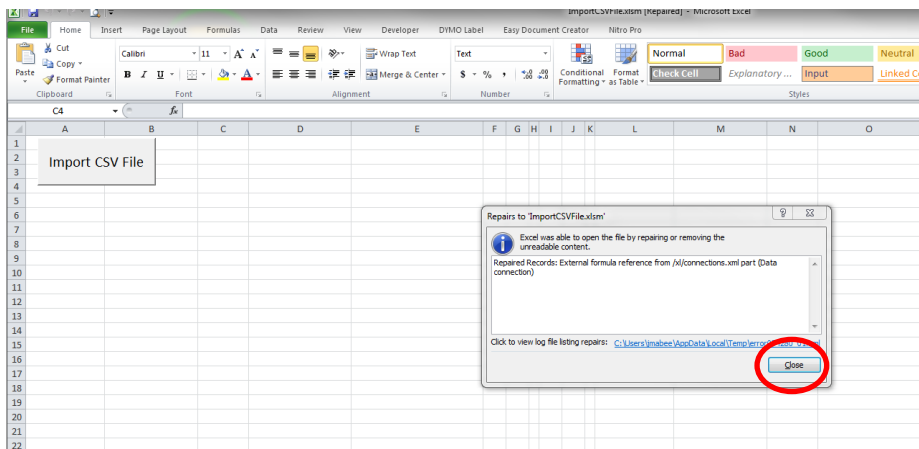
## 8. Open "ImportCSVFile.xlsm".

If you do not have this file, send a request to support@scan-link.com. Once open, a dialog box stating "Excel found unreadable content in 'ImportSCVFile.xlsm'. Do you want to recover the contents of this workbook? If you trust the source of the workbook, click Yes." Click Yes.



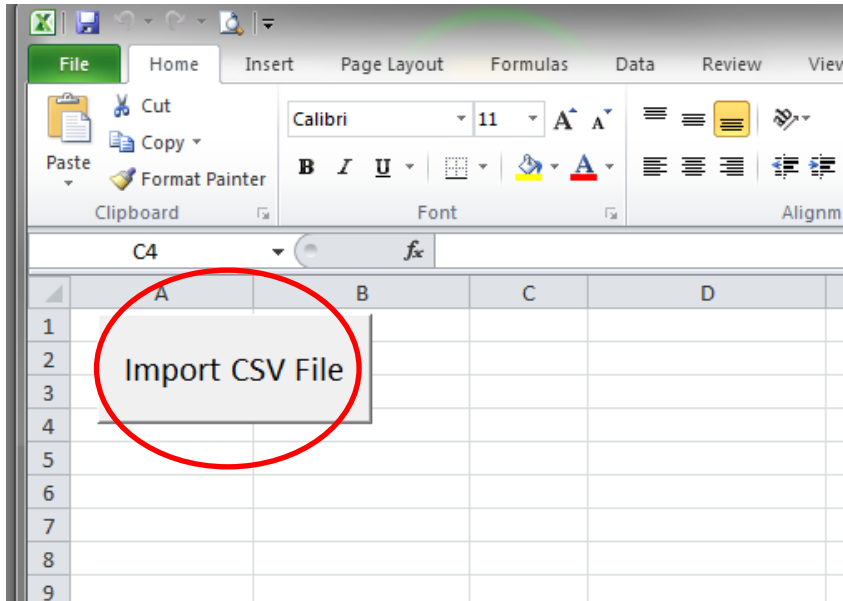
## 9. Repairs to "ImportSCVFile.xlsm"

A second dialog box stating "Excel was able to open the file by repairing or removing the unreadable content..." Select the "Close" button.



### 10. "Select Import SCV File" Button

On the First Tab of the Excel file is a grey button that says "Import CSV File". Double click the button. Select and open the \*.csv file that was downloaded from the Antenna.



### 11. Copy to new file

Copy and paste the imported information into a new Excel file. Use this information to analyze the detections for that Antenna.

